



House - Terraced

LIVINGSTONE ROAD, HOVE

PCM

£2,800



5 2 1 D

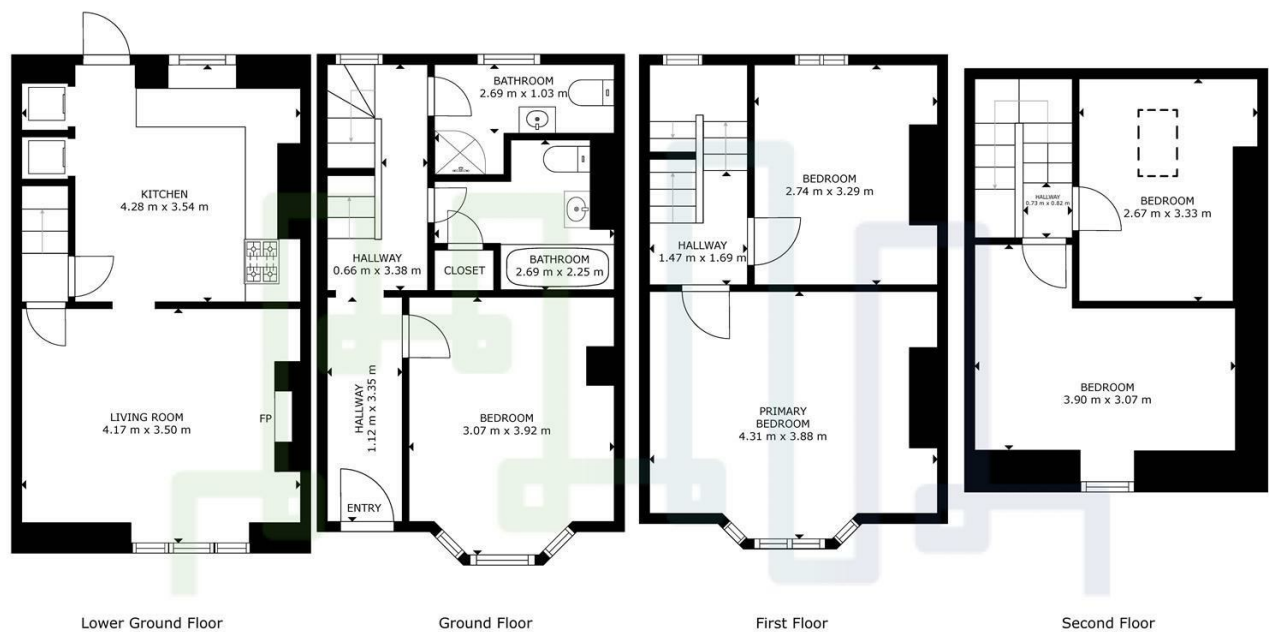
HOME JAMES
LETTINGS & MANAGEMENT

5 Bedroom House - Terraced located in Hove

Student House | August 2026 | (£560pppm | ~£129pppw) | 5 Double Bedrooms | Spacious Kitchen Diner | Separate Sitting Room | Patio Garden | Close to Shops & Hove Train Station | Limited Liability for Guarantors | Inclusive Bills Package Available

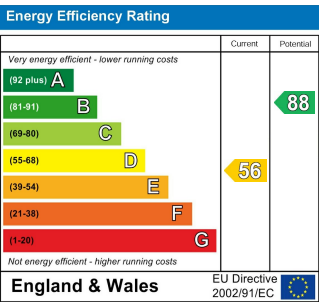
Call us on
01273 952280
info@homejameslets.co.uk
www.homejameslets.co.uk

Council Tax Band
C



GROSS INTERNAL AREA
FLOOR 1: 29 m², FLOOR 2: 30 m²
FLOOR 3: 29 m², FLOOR 4: 24 m²
TOTAL: 112 m²
SIZES AND DIMENSIONS ARE APPROXIMATE, ACTUAL MAY VARY.

HOME JAMES
LETTINGS & MANAGEMENT



Agents Note: Whilst every care has been taken to prepare these particulars, they are for guidance purposes only. All measurements are approximate and are for general guidance purposes only and whilst every care has been taken to ensure their accuracy, they should not be relied upon and potential buyers are advised to recheck the measurements.

HOME JAMES
LETTINGS & MANAGEMENT